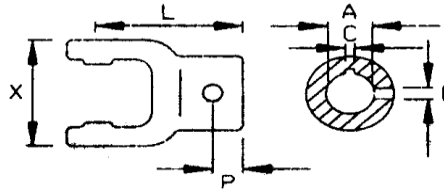

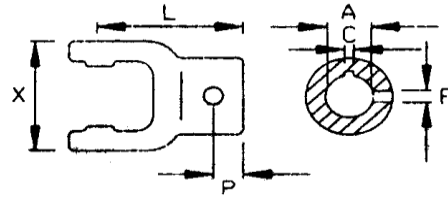



Round Bore Yoke with Keyway & Tapped Hole



Shaft Size		A	C	F	X	P	L	Part No.
2100	22 X 54.8	20	6	M8	65	15	79	8-010151
		22	6	M10				8-01015B
		25	8	M10				8-010152
		30	8	M10				8-010153
		1"	1/4"	3/8" 16UNC				8-1008
		1-1/8"	1/4"	3/8" 16UNC				8-1009
1-1/4"	1/4"	3/8" 16UNC	8-1010					
2200	23.8 X 61.3	20	6	M8	71	20	82	8-010251
		22	6	M10				8-01025B
		25	8	M10				8-010252
		30	8	M10				8-010253
		1"	1/4"	3/8" 16UNC				8-2008
		1-1/8"	1/4"	3/8" 16UNC				8-2009
1-1/4"	1/4"	3/8" 16UNC	8-2010					
2300	27 X 74.6	22	6	M12	85	20	98	8-01045B
		25	8	M12				8-010452
		30	8	M12				8-010453
		35	10	M12				8-010454
		1-1/8"	1/4"	3/8" 16UNC				8-4009
		1-1/4"	1/4"	3/8" 16UNC				8-4010
1-3/8"	5/16"	3/8" 16UNC	8-4011					
1-1/2"	3/8"	3/8" 16UNC	8-4013					
2400	32 X 76	30	8	M12	89	20	96	8-010553
		35	10	M12				8-010554
		40	12	M12				8-010555
		42	12	M12				8-01055C
		1-1/4"	1/4"	3/8" 16UNC				8-2410
		1-1/4"	5/16"	3/8" 16UNC				8-2409
		1-3/8"	3/8"	3/8" 16UNC				8-010550/N
		1-7/16"	3/8"	3/8" 16UNC				8-01055E
		1-1/2"	3/8"	3/8" 16UNC				8-2413
1-3/4"	3/8"	1/2" 13UNC	8-01055A/C					
VII	34 X 90	30	8	M12	89	20	96	8-015653
		35	10	M12				8-015654
		40	12	M12				8-015655
		42	12	M12				8-01565C

Round Bore Yoke with Keyway & Tapped Hole



Shaft Size		A	C	F	X	P	L	Part No.
2500	36 X 89	35	10	M14	106	25	105	8-016754
		40	12	M14				8-016755
		42	12	M14				8-01675C
		45	14	M14				8-016756
		1-3/8"	3/8"	3/8" 16UNC				8-2511
		1-1/2"	3/8"	3/8" 16UNC				8-2515
		1-3/4"	3/8"	3/8" 16UNC				8-2516
		1-3/4"	1/2"	1/2" 13UNC				8-01675A/N
2600	42 X 104	35	10	M14	121	25	130	8-010954
		40	12	M14				8-010955
		45	14	M14				8-010956
		50	14	M14				8-01095P
		1-3/8"	3/8"	3/8" 16UNC				8-2611
		1-1/2"	3/8"	3/8" 16UNC				8-2615
		1-3/4"	1/2"	1/2" 13UNC				8-2616
		2"	1/2"	1/2" 13UNC				8-2617