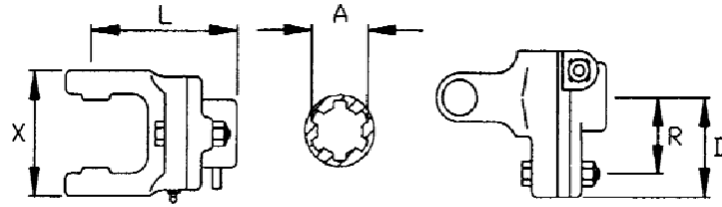



### Shear Bolt Clutch with Quick Disconnect Pin



Shaft Size		D	X	L	A	R	P	Torque	Part No.
2200	23.8 X 61.3	68	71	106	1-3/8"-6	42	M6	780	100-2034
					1-3/8"-21		M8	1,400	100-2035
2300	27 X 74.6	86	117			48	M8	1,600	100-4034
				1-3/8"-21	56	M8	1,860	100-4035	
2400	32 X 76	90	131	1-3/8"-6					
						56	M10	2,920	100-2434
					1-3/8"-21	56	M10	2,920	100-2435
					1-3/4"-20	56	M10	2,920	100-2436
2500	36 X 89	80	105	141	1-3/8"-6	48	M10	2,500	100-2534
					1-3/8"-21	48	M10	2,500	100-2535
					1-3/4"-20	48	M10	2,500	100-2536
2600	42 X 104	124	145	1-3/8"-6	56	M12	4,200	100-2634	
				1-3/8"-21	56	M12	4,200	100-2635	
				1-3/4"-6	64	M12	4,800	100-2637	
				1-3/4"-20	64	M12	4,800	100-2636	