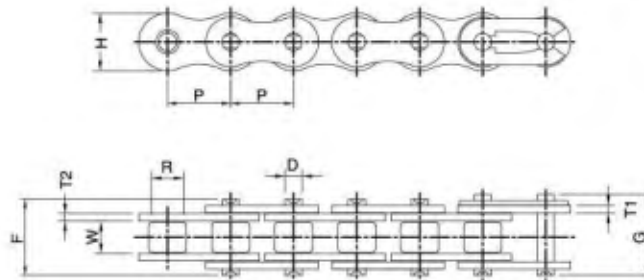


MOTORCYCLE CHAIN



CHAIN NO.	Pitch		Width	Roller	Plate			Pin			Ultimate Strength kgf(min)	Approx Weight kg/m
	P		W	Dia	Height	Thickness		Dia	Length			
	inch	mm	(min)	R(max)	H(max)	T1	T2	D(max)	F(max)	G(max)		
25	1/4"	6.35	3.10	3.30	6.02	0.75	0.75	2.31	9.1	10.6	357	0.14
25-2	1/4"	6.35	3.10	3.30	6.02	0.75	0.75	2.31	15.5	17.0	714	0.26
25H	1/4"	6.35	3.10	3.30	6.02	1.00	1.00	2.31	9.1	10.6	490	0.16
25FH	1/4"	6.35	3.10	3.30	6.02	1.00	1.00	2.31	9.1	10.6	490	0.17
25FH SP	1/4"	6.35	3.10	3.30	6.02	0.80	1.00	2.31	9.1	---	490	0.16
415S	1/2"	12.70	4.68	7.77	9.91	1.00	1.00	3.60	11.1	12.2	920	0.33
415H	1/2"	12.70	4.68	7.77	12.00	1.50	1.50	3.97	13.3	14.5	1592	0.55
420	1/2"	12.70	6.25	7.77	12.00	1.50	1.50	3.97	14.8	16.4	1592	0.61
420H	1/2"	12.70	6.25	7.77	12.00	1.80	1.80	3.97	16.0	17.4	1592	0.66
428	1/2"	12.70	7.75	8.51	12.00	1.60	1.60	4.45	16.8	19.0	1704	0.70
428H	1/2"	12.70	7.85	8.51	12.50	1.80	1.80	4.45	18.9	21.05	1816	0.87
428SH	1/2"	12.70	7.85	8.51	12.50	2.00	2.00	4.45	19.0	20.3	2092	0.90
520	5/8"	15.875	6.25	10.16	15.10	2.00	2.00	5.09	17.7	19.7	2702	0.93
520H	5/8"	15.875	6.25	10.16	15.10	2.40	2.40	5.24	19.2	20.5	3112	1.06
525	5/8"	15.875	7.85	10.16	15.10	2.00	2.00	5.09	19.4	20.9	2702	0.97
525H	5/8"	15.875	7.85	10.16	15.10	2.40	2.40	5.24	21.0	22.2	3112	1.04
530	5/8"	15.875	9.40	10.16	15.10	2.00	2.00	5.09	20.9	22.35	2702	1.04
530H	5/8"	15.875	9.40	10.16	15.10	2.40	2.40	5.09	22.5	24.0	2702	1.18
630	3/4"	19.05	9.40	11.91	18.10	2.40	2.40	5.96	23.2	25.1	3602	1.55
630H	3/4"	19.05	9.40	11.91	18.10	3.20	3.20	5.96	26.2	27.7	3602	1.91