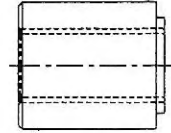
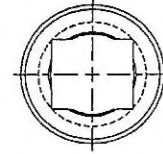


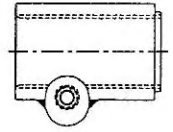
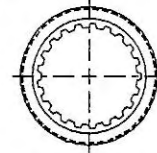
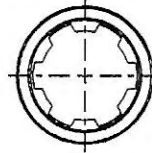
SQUARES

| STOCK NO. | BORE | O.D. | LENGTH THRU | FITS U-JOINT SERIES | APPROX. WEIGHT |
|-----------|--------|---------|-------------|-----------------------|----------------|
| 161-0800 | 1/2 | 1-1/2 | 2-1/4 | 4P, 6N, 12N, 14N | .94 |
| 161-1000 | 5/8 | 1-5/8 | 2-1/4 | 4P, 6N, 12N, 14N | .94 |
| 161-1200 | 3/4 | 1-5/8 | 2-1/4 | 4P, 6N, 12N, 14N | .94 |
| 161-1400 | 7/8 | 1-13/16 | 2-1/4 | 4P, 6N, 12N, 14N | 1.19 |
| 16101600 | 1 | 2 | 2-1/4 | 4P, 6N, 12N, 14N, 35N | 1.25 |
| 16101800 | 1-1/8 | 2 | 2-1/4 | 4P, 6N, 12N, 14N, 35N | 1.63 |
| 161-1900 | 1-3/16 | 2-1/4 | 2-1/4 | 4P, 6N, 12N, 14N | 1.50 |
| 16101900 | 1-3/16 | 2-1/4 | 2-1/4 | 35N | 1.56 |
| 161-2000 | 1-1/4 | 2-1/4 | 2-1/4 | 4P, 6N, 12N, 14N | 1.44 |
| 16102000 | 1-1/4 | 2-1/4 | 2-1/4 | 35N | 1.38 |
| 16102100 | 1-5/16 | 2-1/2 | 2-1/4 | 35N | 1.88 |
| 16102200 | 1-3/8 | 2-1/2 | 2-1/4 | 35N | 1.69 |
| 16102400 | 1-1/2 | 3 | 2-1/4 | 35N | 2.56 |
| 16102600 | 1-5/8 | 3 | 2-1/4 | 35N | 2.32 |
| 16102800 | 1-3/4 | 3 | 2-1/4 | 35N | 3.06 |



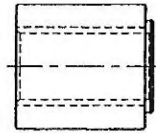
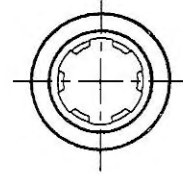
RECTANGULAR

| STOCK NO. | BORE | O.D. | LENGTH THRU | FITS U-JOINT SERIES | APPROX. WEIGHT |
|-----------|---------|-------|-------------|-----------------------|----------------|
| 162-1214 | 3/4x7/8 | 1-5/8 | 2-1/4 | 4P, 6N, 12N, 14N | .88 |
| 16201618 | 1x1-1/8 | 2 | 2-1/4 | 4P, 6N, 12N, 14N, 35N | 1.19 |



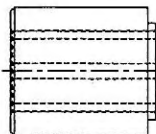
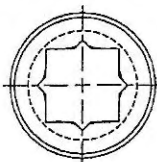
SNAP HITCH

| STOCK NO. | BORE | O.D. | LENGTH THRU | FITS U-JOINT SERIES | APPROX. WEIGHT |
|-----------|----------|---------|-------------|---------------------|----------------|
| 165-2206 | 1-3/8x6 | 1-13/16 | 2-3/4 | 4P, 6N, 12N, 14N | 1.19 |
| 165-2221 | 1-3/8x21 | 1-13/16 | 2-3/4 | 4P, 6N, 12N, 14N | 1.32 |



HEXAGON

| STOCK NO. | BORE | O.D. | LENGTH THRU | FITS U-JOINT SERIES | APPROX. WEIGHT |
|-----------|-------|-------|-------------|-----------------------|----------------|
| 16801000 | 5/8 | 1-5/8 | 2-1/4 | 4P, 6N, 12N, 14N | .96 |
| 16801200 | 3/4 | 1-5/8 | 2-1/4 | 4P, 6N, 12N, 14N | .94 |
| 16801400 | 7/8 | 2 | 2-1/4 | 4P, 6N, 12N, 14N, 35N | 1.50 |
| 16801600 | 1 | 2 | 2-1/4 | 4P, 6N, 12N, 14N, 35N | 1.38 |
| 16801800 | 1-1/8 | 2 | 2-1/4 | 4P, 6N, 12N, 14N, 35N | 1.19 |
| 16802000 | 1-1/4 | 2-1/4 | 2-1/4 | 4P, 6N, 12N, 14N, 35N | 1.40 |



STAR

| STOCK NO. | BORE | O.D. | LENGTH THRU | FITS U-JOINT SERIES | APPROX. WEIGHT |
|-----------|-------|------|-------------|-----------------------|----------------|
| 16401416 | 7/8x1 | 2 | 2-1/4 | 4P, 6N, 12N, 14N, 35N | 1.25 |

SPLINES

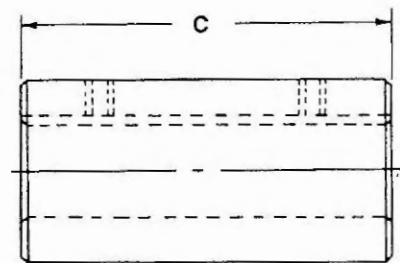
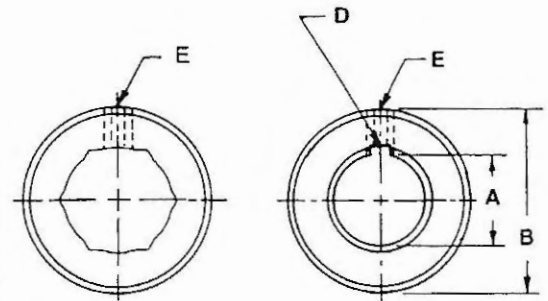
ALL SPLINES ARE A TYPE B FIT.

| STOCK NO. | BORE | P.A. | O.D. | LENGTH THRU | FITS U-JOINT SERIES | APPROX. WEIGHT |
|-----------|----------|------|-------|-------------|-----------------------|----------------|
| 163-1413 | 7/8x13 | 30° | 1-1/2 | 2-1/4 | 4P, 6N, 12N, 14N | .83 |
| 163-1606 | 1x6 | | 1-1/2 | 2-1/4 | 4P, 6N, 12N, 14N | .88 |
| 163-1615 | 1x15 | 30° | 1-1/2 | 2-1/4 | 4P, 6N, 12N, 14N, 35N | .85 |
| 163-1806 | 1-1/8x6 | | 1-5/8 | 2-1/4 | 4P, 6N, 12N, 14N | .75 |
| 16302006 | 1-1/4x6 | | 2 | 2-1/4 | 4P, 6N, 12N, 14N, 35N | 1.25 |
| 16302014 | 1-1/4x14 | 30° | 2 | 2-1/4 | 4P, 6N, 12N, 14N, 35N | 1.25 |
| 16302206 | 1-3/8x6 | | 2 | 2-1/4 | 4P, 6N, 12N, 14N, 35N | 1.13 |
| 16702206 | 1-3/8x6 | | 2 | 5 | 4P, 6N, 12N, 14N, 35N | 2.56 |
| 16602221 | 1-3/8x21 | 30° | 2 | 2-1/4 | 4P, 6N, 12N, 14N, 35N | 1.06 |
| 16302806 | 1-3/4x6 | | 2-1/2 | 2-1/4 | 35N | 1.63 |
| 16302820 | 1-3/4x20 | 30° | 2-1/2 | 2-1/4 | 35N | 1.60 |

A VARIETY OF SPLINE BORE WELDAJOINT® BUSHINGS ARE AVAILABLE; SEND YOUR REQUESTS FOR QUOTATION.

SHAFT COUPLERS

| STOCK NO. | A | B | C | D | E | APPROX. WEIGHT |
|-----------|------------|---------|-------|------|-------------|----------------|
| 126-1000 | 5/8 HEX | 1-1/2 | 2-1/2 | NONE | 2-1/4 x 20 | .51 |
| 126-1200 | 3/4 HEX | 1-5/8 | 3 | NONE | 2-1/4 x 20 | .93 |
| 126-1400 | 7/8 HEX | 1-3/4 | 3 | NONE | 2-1/4 x 20 | 1.32 |
| 126-1600 | 1 HEX | 1-13/16 | 3 | NONE | 2-5/16 x 18 | 1.38 |
| 126-1800 | 1-1/8 HEX | 2 | 4-1/2 | NONE | 2-5/16 x 18 | 2.69 |
| 126-2000 | 1-1/4 HEX | 2-1/8 | 4-1/2 | NONE | 2-5/16 x 18 | 2.88 |
| 127-0800 | 1/2 RD | 1-1/4 | 2 | 1/8 | 2-1/4 x 20 | .56 |
| 127-1000 | 5/8 RD | 1-1/2 | 2-1/2 | 3/16 | 2-1/4 x 20 | 1.00 |
| 127-1200 | 3/4 RD | 1-5/8 | 3 | 3/16 | 2-1/4 x 20 | 1.38 |
| 127-1300 | 13/16 RD | 1-5/8 | 3-1/4 | 3/16 | 2-1/4 x 20 | 1.44 |
| 127-1400 | 7/8 RD | 1-3/4 | 3-1/2 | 3/16 | 2-1/4 x 20 | 1.75 |
| 127-1500 | 15/16 RD | 1-3/4 | 3-3/4 | 1/4 | 2-5/16 x 18 | 1.75 |
| 127-1600 | 1 RD | 1-5/8 | 3 | 1/4 | 2-5/16 x 18 | 1.06 |
| 127-1604 | 1 RD | 1-13/16 | 4 | 1/4 | 2-5/16 x 18 | 1.94 |
| 127-1700 | 1-1/16 RD | 2 | 4-1/4 | 1/4 | 2-5/16 x 18 | 2.19 |
| 127-1800 | 1-1/8 RD | 2 | 4-1/2 | 1/4 | 2-5/16 x 18 | 2.69 |
| 127-1900 | 1-3/16 RD | 2 | 4-1/2 | 1/4 | 2-5/16 x 18 | 2.50 |
| 127-2000 | 1-1/4 RD | 2-1/8 | 4-1/2 | 1/4 | 2-5/16 x 18 | 2.88 |
| 127-2005 | 1-1/4 RD | 2-1/8 | 4-1/2 | 5/16 | 2-5/16 x 18 | 2.80 |
| 127-2200 | 1-3/8 RD | 2-5/16 | 4-1/2 | 5/16 | 2-3/8 x 16 | 3.38 |
| 127-2300 | 1-7/16 RD | 2-5/16 | 4-1/2 | 3/8 | 2-3/8 x 16 | 3.19 |
| 127-2400 | 1-1/2 RD | 2-1/2 | 4-1/2 | 3/8 | 2-3/8 x 16 | 3.88 |
| 127-2600 | 1-5/8 RD | 2-3/4 | 4-1/2 | 3/8 | 2-3/8 x 16 | 4.13 |
| 127-2800 | 1-3/4 RD | 2-3/4 | 4-1/2 | 3/8 | 2-3/8 x 16 | 4.38 |
| 127-3100 | 1-15/16 RD | 3-5/16 | 4-1/2 | 1/2 | 2-1/2 x 13 | 7.00 |
| 127-3200 | 2 RD | 3-5/16 | 4-1/2 | 1/2 | 2-1/2 x 13 | 6.83 |

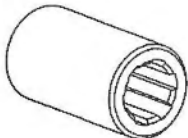

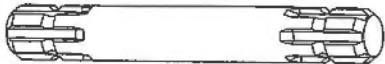





MAT. STEEL

PTO ADAPTOR & SPLINED SHAFT

* STOCKABLE ITEMS

| NAME | REF. | SPLINE FEMALE | SPLINE MALE | LENGTH(mm) |
|------|------|------------------|----------------|------------|
|------|------|------------------|----------------|------------|

| | | | | | |
|--------------------------------|---------------|------------|------------|---|---|
| Splined bush * | * 03-32-00344 | 1 1/8" Z6 | — | 60/65/80/100 |  |
| | * P113806 | 1 3/8" Z6 | — | 60/65/80/100/120/130 | |
| | * P113406 | 1 3/4" Z6 | — | | |
| | * P113821 | 1 3/8" Z21 | — | 60/65/80/100 | |
| | * P113420 | 1 3/4" Z20 | — | | |
| Splined shaft (one end) * | 00.19.A1 | — | 1 1/8" Z6 |  | |
| | * A30106 | — | 1 3/8" Z6 | | |
| | 00.19.C1 | — | 1 3/4" Z6 | | |
| | 00.19.D1 | — | 1 3/8" Z21 | | |
| | 00.19.E1 | — | 1 3/4" Z20 | | |
| Splined shaft (both ends) * | 00.19.A2 | — | 1 1/8" Z6 |  | |
| | * A30207 | — | 1 3/8" Z6 | | |
| | 00.19.C2 | — | 1 3/4" Z6 | | |
| | * A30221 | — | 1 3/8" Z21 | | |
| | * A30220 | — | 1 3/4" Z20 | | |
| Splined shaft (through) * | 00.19.BT | — | 1 3/8" Z6 |  | |
| | 00.19.BT1 | — | |  | |
| | * A30306 | — | |  | |

OTHER SIZE / LENGTH / MATERIAL / HEAT TREATMENT AVAILABLE TO ORDER